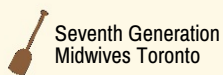




Emergent Principles and Protocols for Indigenous Health Service Evaluation

Well Living House in partnership with Indigenous health service providers in urban and related areas gathered in 2015-2016. A group of experiences and respected evaluators met to inform a set of evidence based guidelines for urban Indigenous health services and program evaluations.

The panel was called the "THREE RIBBON PANEL" in recognition of the inter-relational nature of Indigenous knowledge and practice. Panel partners and participants included:



Seventh Generation
Midwives Toronto



De dwa da dehs nye>s
Aboriginal Health Centre
(DAHC)



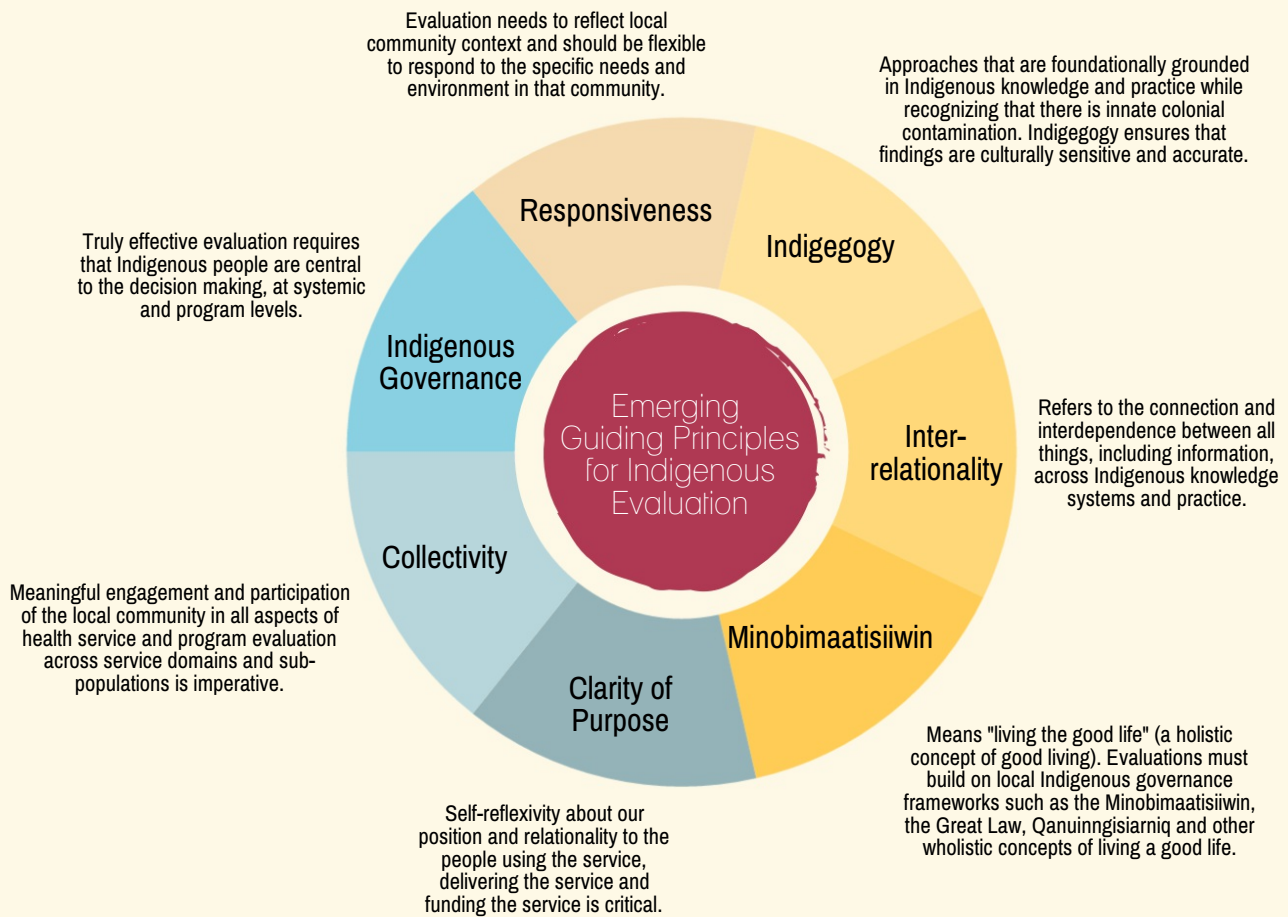
Waasegiizhig Nanaandawe'yewigamig
Health Access Centre



Southwest Ontario Aboriginal
Health Access Centre



Well Living House



Moving from the tall ship to the canoe: Can we decolonize evaluation?
~ Elder, Jeanne Herbert



15 Recommendations

- 1 Demonstrate Indigenous leadership and a commitment to self-determination, including but not limited to the processes by which the evaluation is funded.
- 2 Demonstrate community governance and leadership at every phase, using OCAP or other relevant Indigenous community governance and management principles and protocols.
- 3 Have a majority of Indigenous members on the evaluation team.
- 4 Contribute to an enhancement of relevant, useful, and sustainable evaluation skills and capacities that stay in the Indigenous community in which the evaluation takes place.
- 5 Demonstrate reciprocity for both Indigenous and non-Indigenous team members.
- 6 Demonstrate methods, analysis and dissemination approaches that overtly reflect the Indigenous contexts, values, skills, knowledge, and practices of the communities in which the evaluation takes place.
- 7 Desired by participant communities.
- 8 Demonstrate responsiveness to participant community needs and contexts.
- 9 Reflect participant community priorities both generally and with respect to health and wellness.
- 10 Contribute to holistic Indigenous concepts of good living, such as Minobimaatisiwin, the Great Law and Qanuinqisiarniq.
- 11 Support the recognition and sharing of what is working and what is not.
- 12 Use accessible language to communicate evaluation plans, methods, and results.
- 13 Be appropriately budgeted by funders to support relevant and high quality community leadership, participation, methods, and dissemination.
- 14 Recognize the value of and build on existing intrinsic Indigenous community systems of knowledge and practice. We have always had systems of evaluation and accountability in our communities.
- 15 Leave no community or community member behind. All communities can participate in evaluation activities as long as we start to work with them where they are at and recognize current contextual constraints.

