

# ᐃᓂᓂᓂ ᐊᓂᓂᓂᓂ ᓂᓂᓂᓂ ᓂᓂᓂᓂᓂᓂᓂᓂᓂᓂᓂᓂ ᐊᓂᓂᓂᓂᓂᓂᓂᓂᓂᓂᓂᓂ

ᓂᓂᓂᓂ ᓂᓂᓂᓂᓂᓂᓂᓂᓂᓂᓂᓂ  
ᐃᓂᓂᓂ ᐃᓂᓂᓂᓂᓂᓂᓂᓂᓂᓂᓂ









# ገጽ ፩

2	ገጽ ፩ ገጽ ፩
6	ገጽ ፩ ገጽ ፩
12	<b>ገጽ ፩ ገጽ ፩</b>
12	ገጽ ፩ ገጽ ፩
13	ገጽ ፩ ገጽ ፩
14	ገጽ ፩ ገጽ ፩
14	ገጽ ፩ ገጽ ፩
15	ገጽ ፩ ገጽ ፩
16	ገጽ ፩ ገጽ ፩
17	<b>ገጽ ፩ ገጽ ፩</b>
17	ገጽ ፩ ገጽ ፩
18	ገጽ ፩ ገጽ ፩
19	ገጽ ፩ ገጽ ፩
19	ገጽ ፩ ገጽ ፩
21	ገጽ ፩ ገጽ ፩
21	ገጽ ፩ ገጽ ፩
24	<b>ገጽ ፩ ገጽ ፩</b>
24	ገጽ ፩ ገጽ ፩
25	ገጽ ፩ ገጽ ፩
28	ገጽ ፩ ገጽ ፩
35	ገጽ ፩ ገጽ ፩
38	ገጽ ፩ ገጽ ፩
44	ገጽ ፩ ገጽ ፩
47	ገጽ ፩ ገጽ ፩
50	ገጽ ፩ ገጽ ፩
63	ገጽ ፩ ገጽ ፩
67	ገጽ ፩ ገጽ ፩

























የኮንትራት ገቢዎችን ማረጋገጥ፣ ገቢዎችን ማረጋገጥ፣ ለገቢዎች ማረጋገጥ ለገቢዎች ማረጋገጥ

6. ለገቢዎች ማረጋገጥ፣ ገቢዎችን ማረጋገጥ፣ ለገቢዎች ማረጋገጥ ለገቢዎች ማረጋገጥ
7. ለገቢዎች ማረጋገጥ፣ ገቢዎችን ማረጋገጥ፣ ለገቢዎች ማረጋገጥ ለገቢዎች ማረጋገጥ
8. ለገቢዎች ማረጋገጥ፣ ገቢዎችን ማረጋገጥ፣ ለገቢዎች ማረጋገጥ ለገቢዎች ማረጋገጥ

የጥናትና ምርመራ ማኅበራዊ ስራዎች

2007-2008-ገ፣ ለገቢዎች ማረጋገጥ፣ ገቢዎችን ማረጋገጥ፣ ለገቢዎች ማረጋገጥ ለገቢዎች ማረጋገጥ

ለገቢዎች ማረጋገጥ፣ ገቢዎችን ማረጋገጥ፣ ለገቢዎች ማረጋገጥ ለገቢዎች ማረጋገጥ

ለገቢዎች ማረጋገጥ ማኅበራዊ ስራዎች

ለገቢዎች ማረጋገጥ ማኅበራዊ ስራዎች ለገቢዎች ማረጋገጥ ማኅበራዊ ስራዎች























كۆچمەنلەرنىڭ  
سۆيۈمۈچىسى









































































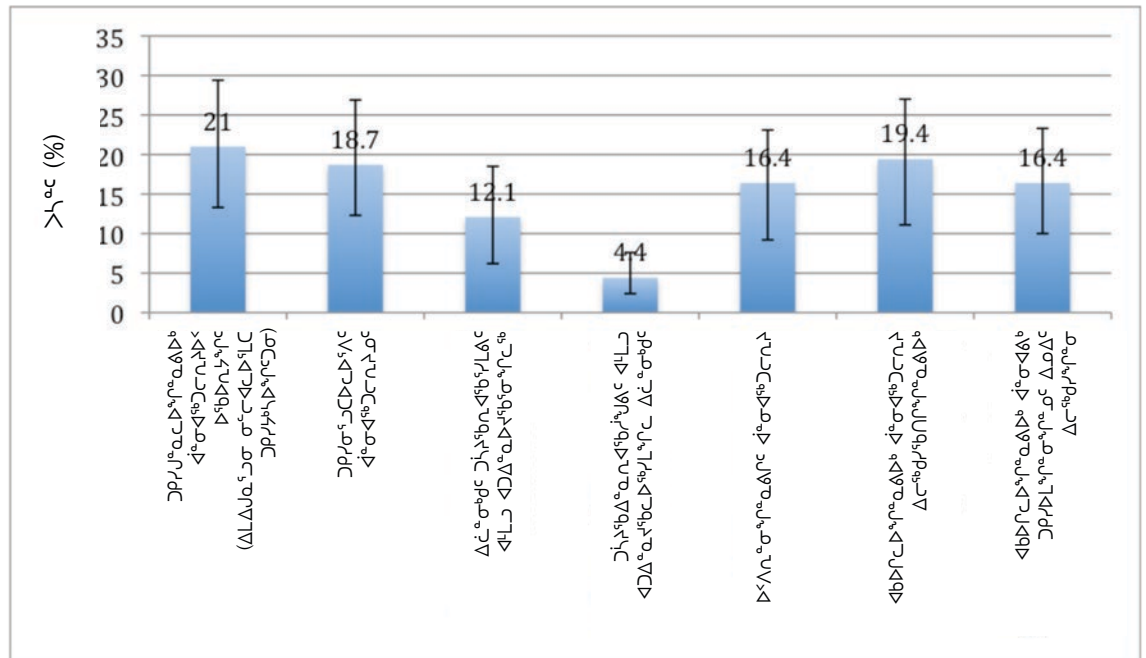


የክፍተት አጠቃቀም ለማረጋገጥ፣ አጠቃላይ የሥራ አፈጻጸም ሪፖርት ይገኛል።

የአጠቃላይ አጠቃቀም ለማረጋገጥ፣ አጠቃላይ የሥራ አፈጻጸም ሪፖርት ይገኛል።

በደረጃው መሰረት የሥራ አፈጻጸም ሪፖርት ይገኛል።

ፈጠራዊ ስራ 29. የክፍተት አጠቃቀም ለማረጋገጥ የሥራ አፈጻጸም ሪፖርት



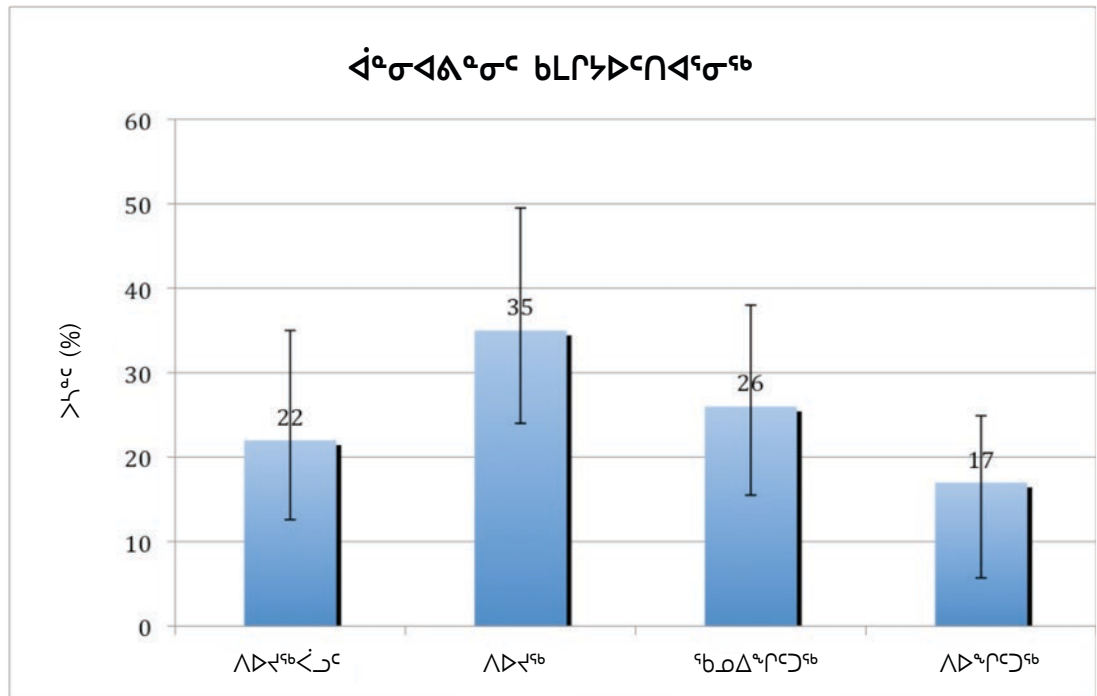
የክፍተት አጠቃቀም ለማረጋገጥ የሥራ አፈጻጸም ሪፖርት ይገኛል።

የክፍተት አጠቃቀም ለማረጋገጥ የሥራ አፈጻጸም ሪፖርት ይገኛል።





ደብዳቤ 30. ለሥራ ላይ የሚሰጡ የሥራ ልምድ ለማሻሻል ለሚያስፈልጉት ስራዎች



የሥራ ላይ ለሥራ ላይ የሚሰጡ የሥራ ልምድ ለማሻሻል ለሚያስፈልጉት ስራዎች ለሥራ ላይ የሚሰጡ የሥራ ልምድ ለማሻሻል ለሚያስፈልጉት ስራዎች ለሥራ ላይ የሚሰጡ የሥራ ልምድ ለማሻሻል ለሚያስፈልጉት ስራዎች

የሥራ ላይ የሚሰጡ የሥራ ልምድ ለማሻሻል ለሚያስፈልጉት ስራዎች

በሥራ ላይ የሚሰጡ የሥራ ልምድ ለማሻሻል ለሚያስፈልጉት ስራዎች ለሥራ ላይ የሚሰጡ የሥራ ልምድ ለማሻሻል ለሚያስፈልጉት ስራዎች ለሥራ ላይ የሚሰጡ የሥራ ልምድ ለማሻሻል ለሚያስፈልጉት ስራዎች

ለሥራ ላይ የሚሰጡ የሥራ ልምድ ለማሻሻል ለሚያስፈልጉት ስራዎች ለሥራ ላይ የሚሰጡ የሥራ ልምድ ለማሻሻል ለሚያስፈልጉት ስራዎች ለሥራ ላይ የሚሰጡ የሥራ ልምድ ለማሻሻል ለሚያስፈልጉት ስራዎች ለሥራ ላይ የሚሰጡ የሥራ ልምድ ለማሻሻል ለሚያስፈልጉት ስራዎች







በስቴት 3. ጋላሌዳዊጋንዳሌ-ላዎርሲገጽ - ላገራዎች ልዩ ልዩ ስርዓተ-ባህሪ ለጋላሌዳዊጋንዳሌ-ላዎርሲገጽ 0,1,2-5 ዓመታት 6+ ዓመታት ስርዓተ-ባህሪ ለጋላሌዳዊጋንዳሌ-ላዎርሲገጽ 18ገ 54J, ልዩ ልዩ ስርዓተ-ባህሪ

ጋላሌዳዊጋንዳሌ-ላዎርሲገጽ	ጋላሌዳዊጋንዳሌ								
	ልዩ ልዩ ስርዓተ-ባህሪ		ልዩ ልዩ ስርዓተ-ባህሪ-ርብራቅ ስርዓተ-ባህሪ ስርዓተ-ባህሪ ስርዓተ-ባህሪ			ላዎርሲገጽ		ላዎርሲገጽ	
	ስርዓተ-ባህሪ	Col %	Col %	95% C.I.	ስርዓተ-ባህሪ	Col %	ስርዓተ-ባህሪ	Col %	
ላዎርሲገጽ	222	100			715,984	100	521,735	100	
ላዎርሲገጽ	108	48.6	56.4	[42, 65.4]	493,190	68.9	397,573	76.2	
1	38	17.1	14.7	[8.2, 26.5]	119,487	16.7	74,482	14.3	
2-5	53	23.9	14.8	[8.8, 24.8]	89,454	12.5	44,762	8.6	
6+	23	10.4	14.1	[5.6, 22.6]	13,853	1.9	4,918	0.9	
<b>ጋላሌዳዊጋንዳሌ-ላዎርሲገጽ (ላዎርሲገጽ)</b>									
ላዎርሲገጽ	125	56.3	61.8	[48.5, 71.4]	575,222	80.3	436,865	83.7	
1	36	16.2	13.8	[7.2, 24.5]	92,401	12.9	58,089	11.1	
2-5	42	18.9	15.2	[8.3, 26.5]	44,356	6.2	24,654	4.7	
6+	19	8.6	9.2	[3, 14.6]	4,005	0.6	2,127	0.4	
<b>ጋላሌዳዊጋንዳሌ-ላዎርሲገጽ (ላዎርሲገጽ)</b>									
ላዎርሲገጽ	165	74.3	76.2	[65, 85.5]	576,762	80.6	454,877	87.2	
1	31	14	10.1	[3.9, 15.6]	89,243	12.5	49,185	9.4	
2-5	21-25	9.5-11.3	11.3	[5, 22.1]	45,105	6.3	16,874	3.2	
6+	1-5	0.5-2.3	2.3	[0, 7.8]	4,874	0.7	799	0.2	



















# Δርቶገጥ

ክፍል ለገጽገጽ: ለገጽ ለገጽ ለገጽ ለገጽ ለገጽ ለገጽ ለገጽ ለገጽ  
[www.tungasuvvingatinuit.ca](http://www.tungasuvvingatinuit.ca) or [www.welllivinghouse.com](http://www.welllivinghouse.com)

Δርቶገጥ ለ - ክፍል ለገጽገጽ ለገጽገጽ ለገጽገጽ ለገጽገጽ ለገጽገጽ ለገጽገጽ

Δርቶገጥ ለ - ለገጽገጽ ለገጽገጽ ለገጽገጽ ለገጽገጽ ለገጽገጽ ለገጽገጽ ለገጽገጽ

Δርቶገጥ ለ - ለገጽገጽ ለገጽገጽ ለገጽገጽ ለገጽገጽ ለገጽገጽ ለገጽገጽ ለገጽገጽ  
 ለገጽገጽ ለገጽገጽ ለገጽገጽ ለገጽገጽ ለገጽገጽ ለገጽገጽ ለገጽገጽ

Δርቶገጥ ለ - ክፍል ለገጽገጽ ለገጽገጽ ለገጽገጽ ለገጽገጽ ለገጽገጽ ለገጽገጽ ለገጽገጽ

Δርቶገጥ ለ - ለገጽገጽ ለገጽገጽ ለገጽገጽ ለገጽገጽ ለገጽገጽ ለገጽገጽ ለገጽገጽ

## ገጽ ለገጽ ለገጽ ለገጽ

1. Health Canada. *A Statistical Profile on the Health of First Nations in Canada: Vital Statistics for Atlantic and Western Canada, 2003-2007.*; 2009. Available at: [http://www.hc-sc.gc.ca/fniah-spnia/alt\\_formats/pdf/pubs/aborig-autoch/2009-stats-profil-vol3/2009-stats-profil-vol3-eng.pdf](http://www.hc-sc.gc.ca/fniah-spnia/alt_formats/pdf/pubs/aborig-autoch/2009-stats-profil-vol3/2009-stats-profil-vol3-eng.pdf).
2. Smylie J, Firestone M. Back to the Basics: Identifying and Addressing Underlying Challenges in Achieving High Quality and Relevant Health Statistics for Indigenous Populations in Canada. *Stat J Int Assoc Off Stat.* 2015.
3. Smylie JK, Anderson I, Ratima M, Crengle S, Anderson MM. Who is measuring who and why? Indigenous Health Performance Measurement Systems in Canada, Australia, and New Zealand. *Lancet.* 2006;367(9527):2029–31. doi:10.1016/S0140-6736(06)68893-4.
4. Statistics Canada. *Indigenous Peoples in Canada: First Nations People, Métis and Inuit.*; 2013. doi:99-011-X2011001.
5. Statistics Canada. *National Household Survey (NHS) Indigenous Population Profile.* Ottawa; 2013. doi:99-011-X2011007.
6. Tungasuvvingat Inuit. *Tungasuvvingat Inuit Annual Report 2011-2012.* Ottawa ON; 2012.
7. Tungasuvvingat Inuit. Tungasuvvingat Inuit. Available at: <http://tungasuvvingatinuit.ca/>.
8. Smylie J, Kaplan-Myrth N, McShane K. Indigenous knowledge translation: baseline findings in a qualitative study of the pathways of health knowledge in three indigenous communities in Canada. *Health Promot Pract.* 2009;10(3):436–46. doi:10.1177/1524839907307993.
9. Smylie JK, McShane K, Tungasuvvingat Inuit Family Health Resource Centre. Understanding Knowledge Translation in an Urban Inuit Community. In: *CIHR- IPPH Knowledge Translation Casebook - Moving population and public health knowledge into action.* Canadian Institute of Health Research (CIHR); 2006.
10. Kane M, Trochim WM. *Concept Mapping for Planning and Evaluation.* California: Sage Publications Inc.; 2006.
11. Karim-Aly K, Graham J. Indigenous knowledge, community participation and traditional land-use mapping. In: *Social Work with Rural and Northern Communities.*; 1999.
12. Salganik MJ. Variance estimation, design effects, and sample size calculations for respondent-driven sampling. *J Urban Heal.* 2006;83(6 (Suppl)):98–112.
13. Nunavik Regional Board of Health and Social Services. *Nunavik Inuit Health Survey 2004.*; 2004.
14. Statistics Canada. Statistics Canada 2006 Community Profiles: Ottawa. *Stat Canada Community Profiles.* Available at: <http://www12.statcan.gc.ca/census-recensement/2006/dp-pd/prof/92-591/details/page.cfm?Lang=E&Geo1=CSD&Code1=3506008&Geo2=PR&Code2=35&Data=Count&SearchText=ottawa&SearchType=Begins&SearchPR=01&B1=All&Custom=>.





38. Kessler RC, Andrew G, Colpe LJ, et al. Short screening scales to monitor population prevalences and trends in non-specific psychological distress. *Psychol Med.* 2002;32:959-976. Available at: <http://journals2.scholarsportal.info.myaccess.library.utoronto.ca/tmp/16251877752428454629.pdf>.
39. Slade T, Grove R, Burgess P. Kessler Psychological Distress Scale: normative data from the 2007 Australian National Survey of Mental Health and Wellbeing. *Aust N Z J Psychiatry.* 2011;45(4):308–316.
40. First Nations Information Governance Centre. *First Nations Regional Health Survey 2008/10: National Report on Adults Living in First Nations Communities.* Ottawa; 2012.
41. Kirmayer L, Brass GM, Holton T, Paul K, Simpson C, Tait C. *Suicide Among Indigenous People in Canada.* Ottawa: Indigenous Healing Foundation; 2007.
42. Health Canada. *National Indigenous Youth Suicide Prevention Strategy (NAYSPS).*; 2013.
43. Kanatami IT. *Backgrounder: Inuit suicide prevention.* Ottawa; 2007. Available at: [www.itk.ca/media/backgrounder-suicide\\_prevention.php](http://www.itk.ca/media/backgrounder-suicide_prevention.php).
44. Wilkins R, Uppal S, Finès P, Senécal S, Guimond É, Dion R. *Life expectancy in the Inuit-inhabited areas of Canada, 1989 to 2003.*; 2008. Available at: <http://www.statcan.gc.ca/pub/82-003-x/2008001/article/10463-eng.pdf>.
45. Statistics Canada. *Indigenous Peoples Survey 2006: Adults, Children and Youth.* Ottawa; 2006.
46. Circumpolar Inuit Cancer Review Working Group, Kelly J, Lanier A, et al. Cancer among the circumpolar Inuit , 1989 – 2003 II . Patterns and Trends. *Int J Circumpolar Health.* 2003;67(li):408–420.
47. Nguyen D, Proulx J-F, Westley J, Thibert L, Dery S, Behr M a. Tuberculosis in the Inuit community of Quebec, Canada. *Am J Respir Crit Care Med.* 2003;168(11):1353–7. doi:10.1164/rccm.200307-910OC.
48. Macdonald N, Mhsc PCH, Stanbrook MB. Tuberculosis in Nunavut: a century of failure. *CMAJ.* 2011;183(7).
49. Champlain Local Health Integration Network. *Profile of the Champlain Communities of Care : Focus on Profile of the Champlain Communities of Care : Focus on Ottawa West.*; 2008.



ᐃᓄᓂᓂ ᐃᓄᓂᓂᓂᓂᓂᓂᓂᓂᓂᓂ  
ᓄᓄᓂᓂᓂᓂᓂᓂᓂᓂᓂᓂᓂᓂ  
ᐃᓄᓂᓂᓂᓂᓂᓂᓂᓂᓂᓂᓂᓂ

ᓄᓄᓂᓂᓂᓂᓂᓂᓂᓂᓂᓂᓂᓂ  
ᐃᓄᓂᓂᓂᓂᓂᓂᓂᓂᓂᓂᓂᓂ

WWW.TUNGASUVVINGATINUIT.CA



TUNGASUVVINGAT INUIT • 1071 Richmond Road • Ottawa • ON • K2B 6R2 • (613) 565-5885 • info@tungasuvvingatinuit.ca

ᐃᓄᓂᓂ ᐃᓄᓂᓂ ᐃᓄᓂᓂ